

## RDS2000 Radio Data System Encoder

### MAIN CHARACTERISTICS:

- RS232 for configuration with Windows® Software
- RDS Signal level adjust
- 19kHz Input available on rear panel
- 19kHz Extraction by MPX signal
- Control of leap years
- 50 PSN
- 100 AF list
- Date, time and CT
- Radiotext
- TA - PTY - MS
- Traffic message channel
- EON
- Linkage information
- Language identification code
- Application identification
- Program type name
- Enabling of transmitted groups
- Commands: TA - TA EONO - TA EON1 - TA EON2 - TA EON3 - TA EON4 - MS - RDS OFF remote available on contacts

Radio Data System is an not audible, digital information transmission system, introduced by FM radio stations in addition to audio programs. The RDS2000 coder is the latest, satellite programmable version, by Elettronika.

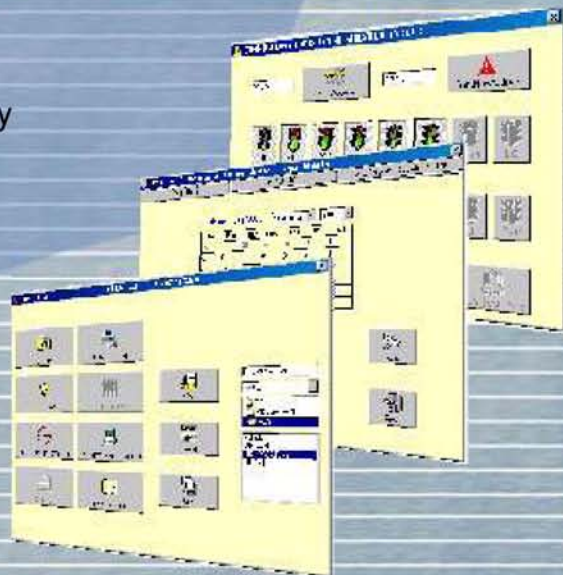
The latest radical development of this system now allows programming of the RDS Coder via Satellite, an indispensable innovation that Elettronika has implemented with the creation of the RDS2000.


The data download is made easy thanks to an user-friendly Windows® software.

The RDS2000 allows the RDS signal synchronization both

either from a 19kHz or an MPX input signal.

The RDS2000 is extraordinary for the astonishing price which is guaranteed to surprise you. Designed to the highest standards, the RDS2000 is an innovative system, highly reliable, simple to operate, created for discerning broadcasters and capable of exploiting today's evolving RDS technology.



 Rear panel



**RDS2000**

# Technical characteristics

## RDS SECTION

RDS Signal	Standard Specification EBU Doc. Tech. 3244-E and Cenelec PrEN 50067
Coding	Differential and Biphasic
Modulation	DSB-suppressed carrier
Frequency	57kHz
Bandwidth	± 2.4kHz

## 19kHz INPUT SECTION

Level	1Vpp - Sinusoidal Wave
Impedance	10kΩ
Connector	BNC

## MPX+RDS OUTPUT SECTION

Impedance	100Ω (Max load 5kΩ)
Connector	BNC
RDS Injection into MPX Signal	- Infinite, - 16dB
RDS Output Level	0dBμV

## DATA SYNCRONIZATION SECTION

Terminal Interface	RS232-C at rear, Asynchronous
Data Input	Full duplex
Format	Selectable
Transmission Speed	1200, 2400, 4800, 9600, 19200 baud dipswitch selectable
Connector	9 Contact Subminiature Cannon Female
RDS Data Management	Microprocessor controlled 128KByte non-volatile memory RAM (data retention: 10 years)

## SIGNAL SYNCRONIZATION SECTION

Synchronization	Asynchronous Synch to 19kHz Input Synch to MPX Input
-----------------	------------------------------------------------------------

## GENERAL

Power Supply	115V <sub>AC</sub> , 230V <sub>AC</sub> (Internally selectable) 50Hz, 60Hz
Power Requirements	4VA
Dimensions	1U 19" Rackmount
Weight	2.5kg
Operating Temperature	0°C to +50°C
Command	TA, TA EON0, TA EON1, TA EON2, TA EON3, TA EON4, MS, RDS OFF remote available on the rear panel via Cannon 25 pin connector

*These specifications are subject to change without notice*



P.O Box 207 Goebung  
Brisbane Australia 4034  
Ph: +61 7 3504530 Fax: +61 7 3315 4683  
info@n-com.com.au www.n-com.com.au



SS 96 km 113 Z.I.  
70027 PALO DEL COLLE (BA) ITALY  
Tel. +39.080.626755 (PBX) - Fax +39.080.629262  
elettronika@elettronika.it www.elettronika.it